

COLOURSHADE



ASTM E84 NFPA 701 UL 2218 (Class: 4)

Knittex[®]
Since 1964





DECORATIVE SHADE NETTING

Brought to you by



CHOOSE FROM A VARIETY OF DIFFERENT COLOURS
OUR SHADE NET INCORPORATES A KNITTED LOCK STITCH
WITH A MONOFILAMENT AND TWO TYPE YARNS FOR
DEMINSIONAL STABILITY, TEAR AND FRAY RESISTANCE
Our PATTERN GIVES EXCELLENT WEFT AND WARP STABILITY
PROUDLY MANUFACTURED IN SOUTH AFICA



Since 1964



STANDARD PRODUCT RANGE

ASTM E84

NFPA 701

UL 2218 (Class: 4)



MADE IN SA



STANDARD PRODUCT RANGE



Since 1964

Black

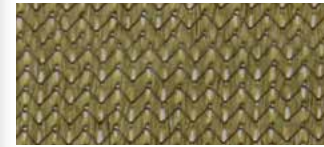
TOP



BOTTOM



Bush Khaki



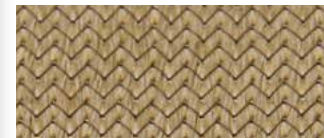
Charcoal



Chocolate



Cinnamon



Desert Sand



Navy Blue



Rain Forest
Green

TOP



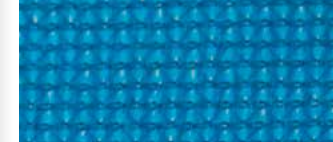
BOTTOM



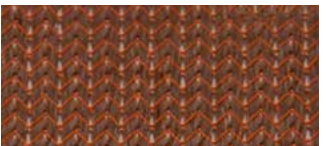
Red



Royal Blue



Rust Gold



Silver



Terracotta





ASTM E84

NFPA 701

UL 2218 (Class: 4)



MADE IN SA



NON-STANDARD PRODUCT RANGE

NON-STANDARD PRODUCT RANGE

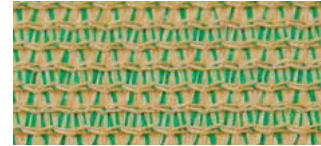


Since 1964

TOP

BOTTOM

Acacia



Arizona



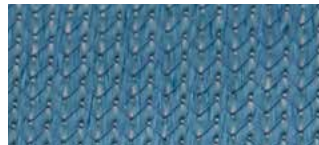
Atomic Orange



Electric Purple



Laguna Blue



Mulberry



Olive



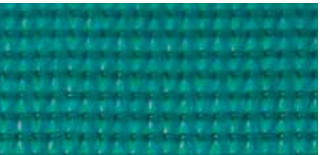
Red Earth



Sunflower Yellow



Turquoise



White



Zesty Lime





NON-STANDARD PRODUCT RANGE - STRIPE (new pattern)

ASTM E84

NFPA 701

UL 2218 (Class: 4)



MADE IN SA

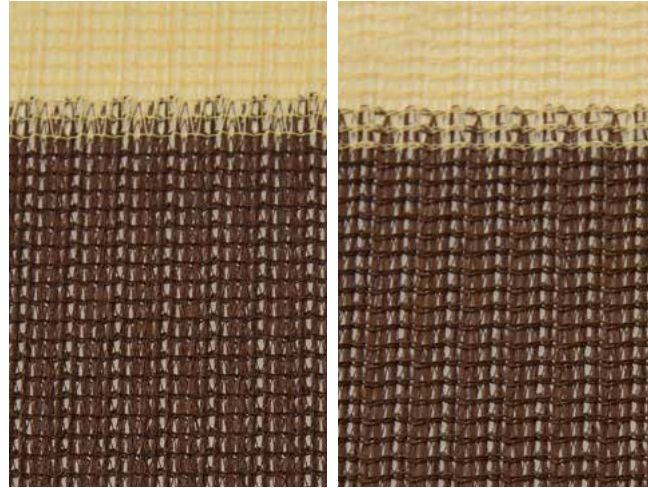


Since 1964

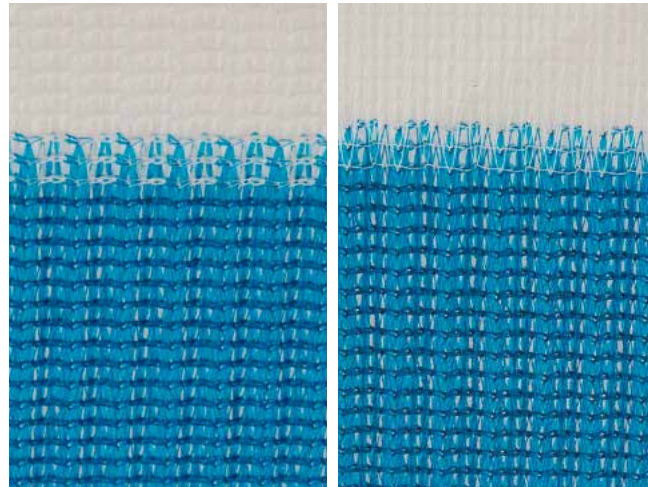
TOP

BOTTOM

Brown/Beige



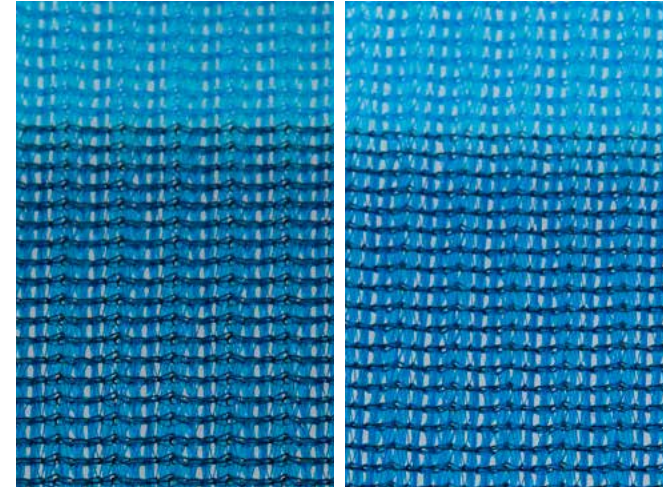
Blue/White



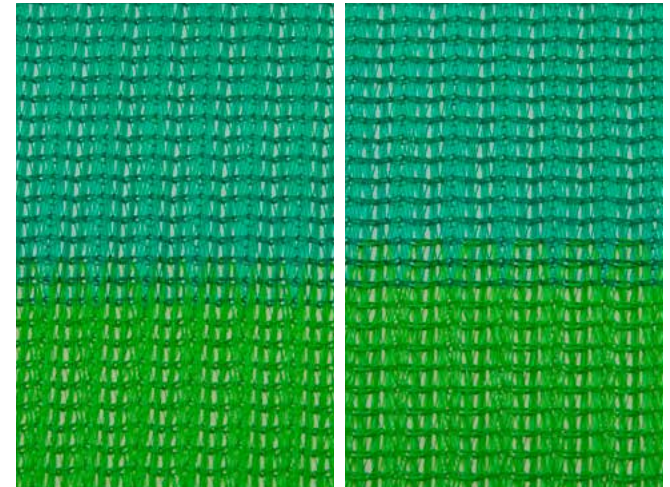
2 Tone Blue

TOP

BOTTOM



2 Tone Green





ASTM E84

NFPA 701

UL 2218 (Class: 4)



MADE IN SA



COLOURSHADE Z25 Standard Range	SHADE FACTOR %	UV BLOCK OUT %
Black	95	96
Bush Khaki	89	93
Charcoal	94	95
Chocolate	92	93
Cinnamon	88	93
Desert Sand	80	92
Navy Blue	90	94
Rain Forest Green	89	96
Red	91	92
Royal Blue	86	94
Rust Gold	90	94
Silver	88	93
Terracotta	84	90
COLOURSHADE Z25 Non-Standard Range		
Acacia	80	95
Arizona	86	91
Atomic Orange	82	94

	SHADE FACTOR %	UV BLOCK OUT %
Electric Purple	84	90
Laguna Blue	92	96
Mulberry	90	91
Olive	93	97
Red Earth	93	97
Sunflower Yellow	70	94
Turquoise	83	92
White	57	86
Zesty Lime	83	92
COLOURSHADE Stripe Range: (New pattern)	SHADE FACTOR %	UV BLOCK OUT %
Beige/Brown	65	90
Blue/White	60	87
Two-Tone Blue	75	83
Two-Tone Green	70	86

TECHNICAL FEATURES

- Colourshade Z25 is a three bar knitted, lockstitch Z pattern, incorporating one monofilament and two type yarns for dimensional stability, tear and fray resistance.
- The fabric his manufactured at our factory, in South Africa, and is made from virgin High-density polyethylene (HDPE).
- The Z pattern gives excellent weft and warp stability, due to extended throw of the weft yarns across the knitting needles during fabrication of the fabric.
- The Z pattern design achieves high density coverage with the weft yarns, giving up to 97% UV block out and exceptional water run off properties.
- The Z25 fabric is heat set using a stentering process, giving additional dimensional stability and strength as a result of shrinking and equalizing the yarn lengths and knots in the three bar lock-stitch pattern.
- The stentering of the Z25 fabric assists in reducing sagging and looseness in the fabric after installation.
- These fabrics are used extensively for large tension structures, carports, shade sails, awnings and other types of shade covers.



**Manufacturers of Knitted Agricultural
and Decorative Shade Net Fabrics**

www.knittex.co.za
Tel: +27 (0)11 692 1658
Email: sales@knittex.co.za
clientliaison@knittex.co.za



Available in:
- 50m rolls and cut lengths
- Standard width: 3m (folded to 1.5m)

